



## REGIONAL SPECIALISED METEOROLOGICAL CENTRE-TROPICAL CYCLONES, NEW DELHI TROPICAL WEATHER OUTLOOK

DEMS-RSMC TROPICAL CYCLONES NEW DELHI DATED 31.05.2025

**TROPICAL WEATHER OUTLOOK FOR THE NORTH INDIAN OCEAN (THE BAY OF BENGAL AND THE ARABIAN SEA) VALID FOR THE NEXT 168 HOURS ISSUED AT 0600 UTC OF 31.05.2025 BASED ON 0300 UTC OF 31.05.2025.**

### BAY OF BENGAL:

The low pressure area over northeast Assam & neighbourhood became less marked at 0300 UTC of today, 31<sup>st</sup> May, 2025. However, the associated cyclonic circulation persisted over the same region & extends upto 3.1 km above mean sea level at 0300 UTC of today, 31<sup>st</sup> May, 2025.

Scattered to broken low and medium clouds with embedded moderate to intense convection lay over north & central Bay of Bengal, North Andaman Sea, Gulf of Martaban, Tenasserim coast & Arakan coast. Scattered low and medium clouds with embedded weak to moderate convection lay over south Bay & south Andaman Sea.

#### \*PROBABILITY OF CYCLOGENESIS (FORMATION OF DEPRESSION) DURING NEXT 168 HRS:

24 HOURS	24-48 HOURS	48-72 HOURS	72-96 HOURS	96-120 HOURS	120-144 HOURS	144-168 HOURS
NIL	NIL	NIL	NIL	NIL	NIL	NIL

\*NOTE: EVERY 24HR FORECAST IS VALID UPTO 0300 UTC (0830 IST) OF NEXT DAY

### ARABIAN SEA:

Scattered to broken low and medium clouds with embedded moderate to intense convection lay over south Arabian Sea, Lakshadweep Islands area, Maldives & Comorin area. Scattered low and medium clouds with embedded isolated weak to moderate convection over central Arabian Sea.

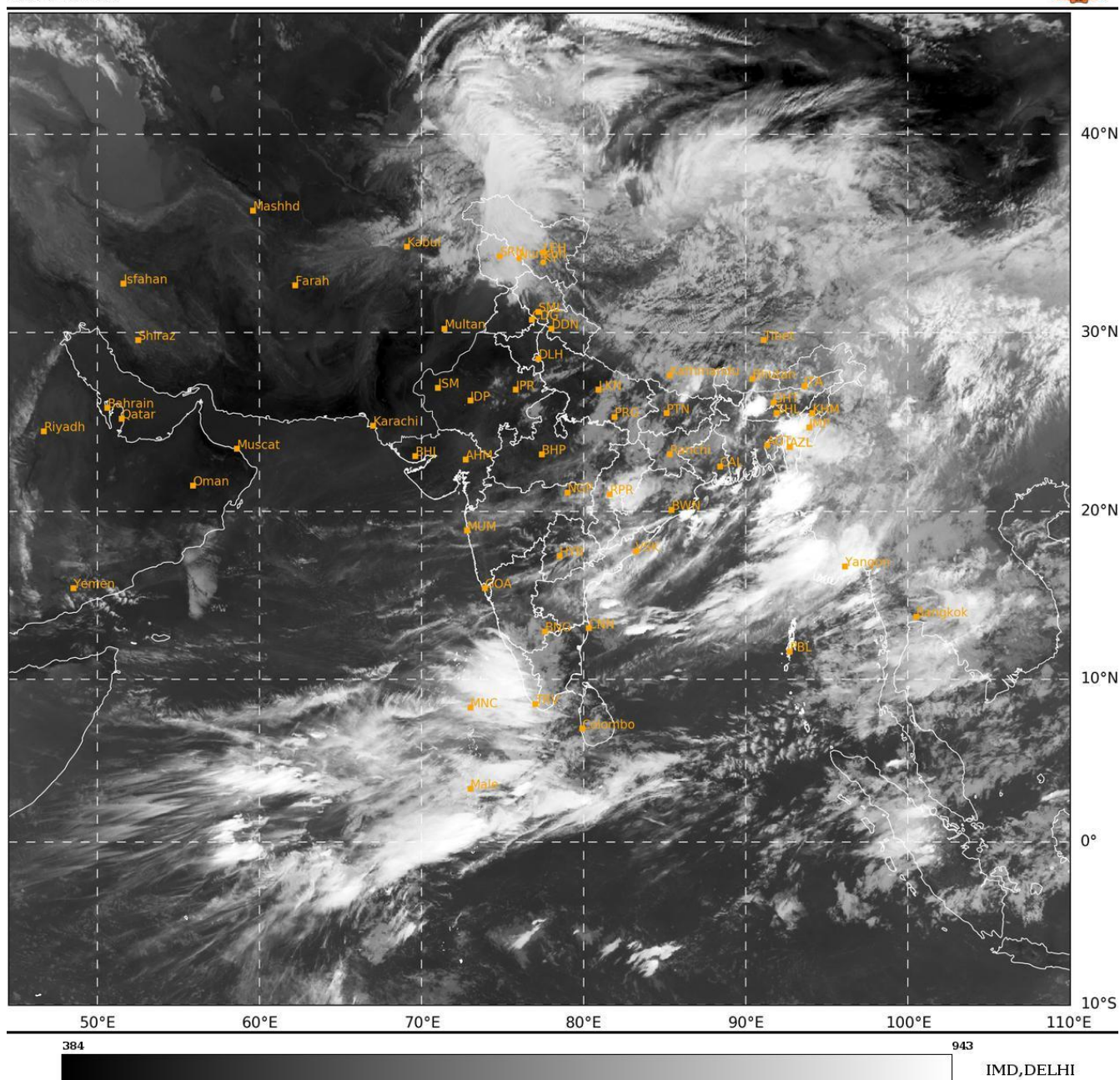
#### \*PROBABILITY OF CYCLOGENESIS (FORMATION OF DEPRESSION) DURING NEXT 168 HRS:

24 HOURS	24-48 HOURS	48-72 HOURS	72-96 HOURS	96-120 HOURS	120-144 HOURS	144-168 HOURS
NIL	NIL	NIL	NIL	NIL	NIL	NIL

\*NOTE: EVERY 24HR FORECAST IS VALID UPTO 0300 UTC (0830 IST) OF NEXT DAY

**REMARKS:** NIL

31-05-2025/(0315 to 0342) GMT  
31-05-2025/(0845 to 0912) IST



**Cloud distribution: (a) Isolated: <25%, Scattered:25-50%, Broken: 51-75%, Solid:>75%, Convection Intensity: (a) Weak: Cloud Top Temperature(CTT)>-25°C,(b)Moderate:CTT:-25°Cto-40°C,(c)Intense:CTT: -41°Cto -70°Cand(d)Very Intense::Less than -70°C**  
**PROBABILITYOFCYCLOGENESIS(FORMATIONOFDEPRESSION):NIL:0%,LOW:1-33%,MODERATE:34-66%ANDHIGH:67-100%**  
**ThisisaguidanceBulletinforWMO/ESCAPPanelMembercountries.VisitrespectiveNationalwebsitesforCountryspecificBulletins**